



THE TIWI

NEWS for
Traditional
Owners



NEWS from your LAND Council

Good to know

The Vernon Islands were officially handed over to the Tiwi Aboriginal Land Trust on 12th of March 2018 by federal minister Nigel Scullion and Chief Minister Michael Gunner.

See page 3



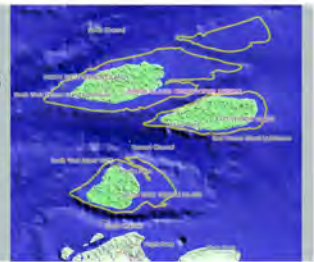
Chairman's Words

Welcome to our new edition for April/May 2018 of *The Tiwi*. Again we send our prayers and thoughts to family who have lost loved ones over the past few weeks including Mr Puruntatameri, who was a true Tiwi Leader in every way. A humble, gentle man, he lived his life for others. From the TLC to Local Government, he ran the Tiwi Islands Football League for many years, was an inaugural member of the Tiwi Bombers Football Club and the Tiwi Education Board and most recently helped our Tiwi family members in detention. Rest In Peace my friend.

Your TLC has been busy over the past weeks including with our Science Reference Committee meeting in Melbourne to gain the highest quality scientific advice on how to look after our land and sea for our future generations.

In these pages you will also see that we celebrated the Vernon Islands being handed over to Tiwi. 30 years of hard work by our leaders past and present, gathering evidence, attending court hearings and dedication to getting the official result that Tiwi people already knew. The Vernon Islands are Tiwi.

Vernon Islands between Tiwi Islands and mainland



I am humbled to be elected for my third term as TLC Chairman with Leslie Tungatulum as my Deputy. I can assure everyone that I accept this honour and the responsibility that comes with it, seriously and will be doing my upmost to represent the Tiwi people as best as I possibly can.

Topics

Chairman's Words	1
EMC Notes	2
The Vernon Islands	3
12th Tiwi SRC meeting	4
Tiwi Ranger work with turtle researchers	5
Place and Partnerships Conference	6
RISE program - opportunity for Tiwi students	7
The Hayden Reynolds Tiwi College program	8



Official handover of the Vernon Islands to Tiwi landowners

See page 3

Chairman's Words



People will know our CEO has been crook for sometime now and we wish him a speedy recovery but it has also created opportunities for our young Tiwi Leaders to step up to the mark and go to the next level. Andrew Tipungwuti, as our Acting CEO, has been outstanding in this role for the past few months and it is important that the TLC and wider Tiwi community continue to support him and your TLC Executive as we strive to continue with the good works of our great leaders of our past.

I hope you enjoy this edition of *The Tiwi* and look forward to the great Dry season we are about to enter. A time to create wonderful memories with our family and friends.

Gibson Farmer Illortaminni
Chairman
Tiwi Land Council

Executive Management Committee

EMC's Notes

Awana Everyone,



Tiwi Land Council Executive Management Committee

Well it's been another very busy time for your Executive Managers here at the Tiwi Land Council.

As you all would know, we have ended this year's wet season in true Top End style. Cyclone Marcus developed and smashed both the Tiwi Islands and Darwin, luckily not so much the Tiwi's though! With such a weather event happening it's always going to be a community effort to prepare, look after each other, restore everything back to the way it was and get to work on the roads to ensure that all Tiwi are safe. As usual in such trying times Tiwi came together, looked after each other and were patient until all essential services were back to 100%.

During this last wet season, we've also had a few issues with communications on the Islands. Tiwi Land Council was in direct contact with Telstra on several occasions, being the only line of communication between the Islands and the exchange. Again, Tiwi mob and Tiwi organisations came together and passed on very important updates to the wider community. To have no way of contacting the outside world and not having access to money at the shops was very worrying.

The Vernon Islands handover ceremony was the big story since our last issue.

Great news for Mantiyupwi and all Tiwi! You can read all about it in this issue.

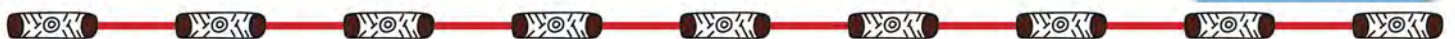
As we progress into 2018 your Tiwi Land Council representatives want to let you know that we are working hard for you all. Continuing our work on many different committees around Australia relating to sea, land, environment, health and education. We continue to look at ways in which we can create more opportunities for all Tiwi people and future generations.

*Executive Management
Committee*

Contact

Ph: 08 8997 0797

info@tiwilandcouncil.com



The Vernon Islands



One of the longest running land claims has finally been settled. Almost 40 years after Tiwi land was first recorded on Australian Registers as property of the Tiwi people, the Vernon Islands have now been legally included as part of this property.

First mapped by Philip Parker King back in 1818 – now almost 200 years to the day later, a small ceremony has concluded Tiwi Mantiyupwi ownership of islands that provide the “stepping stones” between Melville and the mainland. “These are the fingers of our land reaching out to welcome visitors to Darwin. They protect Darwin too,” said John Baptist Pupungamirri, Chairman of Trustees back in the 1980’s.

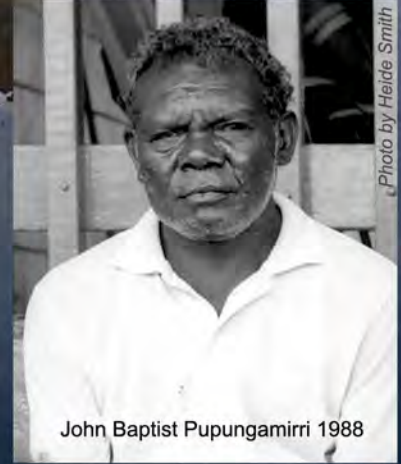


Photo by Heide Smith

John Baptist Pupungamirri 1988

The Vernon shipping lanes require protection. A lighthouse built in the 1920’s has been shining out a warning light every five seconds of every day ever since. No ship has been wrecked coming through the Vernons’. The light continues to shine. These past six years have required detailed mapping, numerous meetings and court appearances, conservation planning and discussions with shipping, navigation, fishing, tourism and other authorities. Now completed, the Vernon Islands are back where they have always belonged – part of our remarkable Tiwi Islands!

Tiwi Land Council

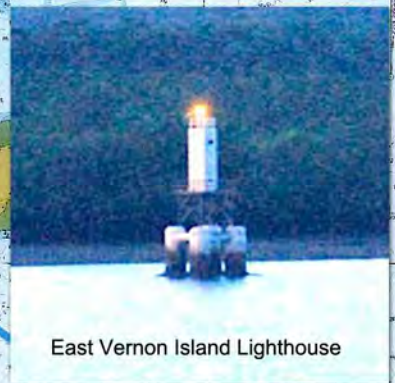
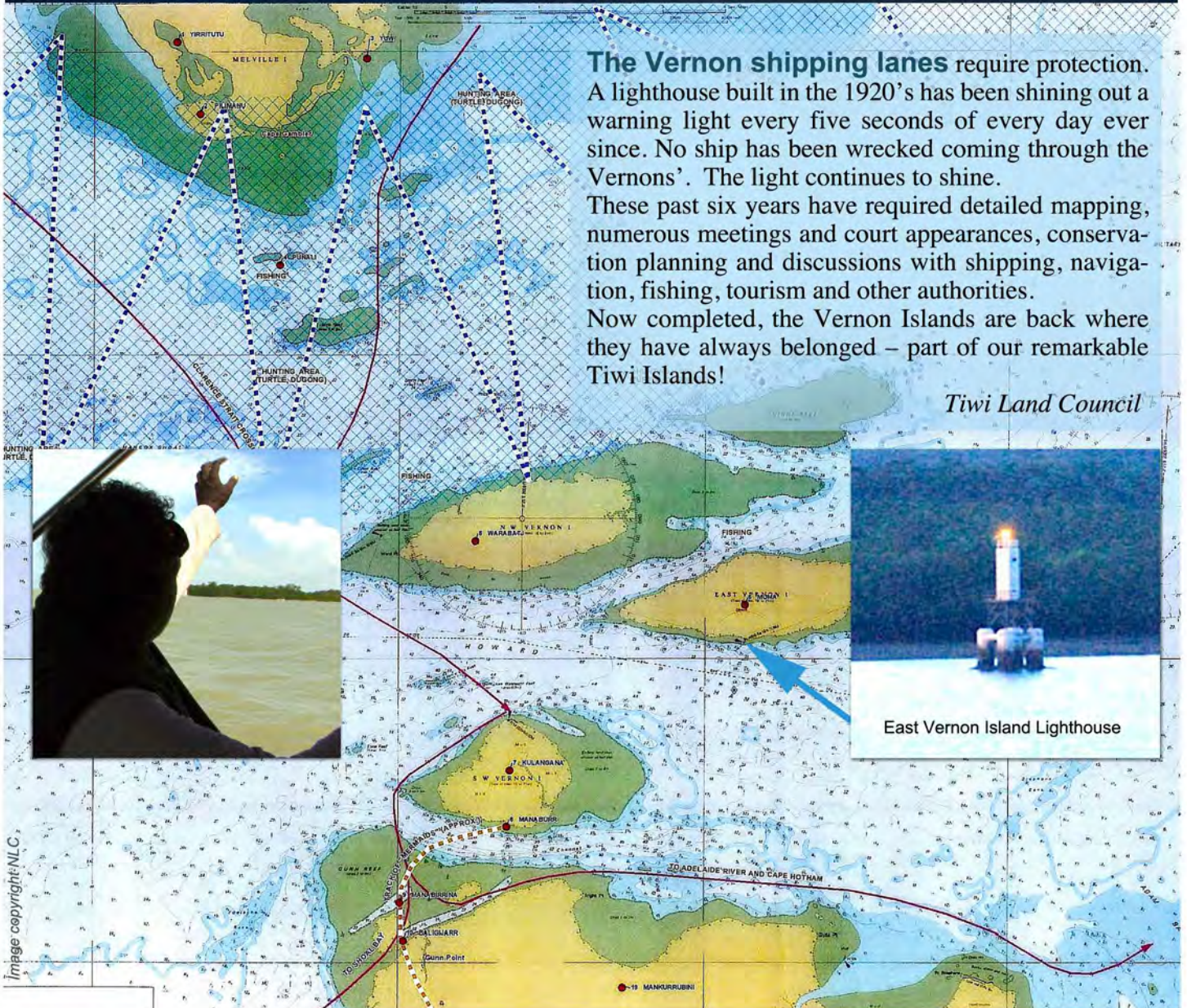


Image copyright: NLC.

12th Science Reference Committee meeting in Melbourne



Scientists from the University of Melbourne met with representatives from the Tiwi Land Council, Land and Marine Rangers, TLC staff and other supporters of Tiwi work at our first Science Reference Committee meeting for 2018, and our 12th meeting since the Committee was formed in 2011.

There are a lot of interesting and important research projects happening on the Tiwi Islands, and researchers provided updates on their projects, which have all been carried out with support from the TLC and Tiwi Rangers. Michelle Freeman showed us how burning at different times of the year affects trees, and that late, hot fires can stop seedlings becoming adult trees. But also, how early, patchy fires help other trees to grow tall.



Hugh Davies



Michelle Freeman

Hugh Davies talked about ongoing work with Tiwi Rangers looking at how many feral cats there might be on the Tiwi Islands, and how much damage they could be doing to populations of Tiwi animals, especially bandicoots. The next stage of this work is to find out if there are ways to reduce the impacts of feral cats.

Chris Gatto and James Desantis provided an update of recent fieldwork to collect turtle eggs so that studies can be done to find out if they will be affected by potential sea-level rise. The eggs will be hatched in Melbourne, and hatchlings flown back up to the Tiwi Islands to be released.



Kim Puruntatameri



Jonathon Munkara

12th Science Reference Committee



New projects that were talked about included a research proposal to find out if recreational fishing is affecting Tiwi fish stocks, ways to link research projects to the TLC website so they are available for everyone to look at, and a project to gather film and photographic records of ceremony and meetings for safe storage and access to Tiwi people.



The SRC continues to be a valuable place for us to talk about research needs, and we are grateful to the University of Melbourne for their ongoing support. We look forward to the next meeting to be held on the Tiwi Islands in October.

*Kate Hadden, Manager Land & Resources
Tiwi Land Council*



John Wilson and David Guy

Prof. Peter Vesk

Stanley Tipiloura and Kate Hadden

Tiwi Rangers work with turtle researchers

In April researchers from Melbourne came to the Tiwi Islands and worked with Tiwi Marine and Land Rangers to collect information about turtles. One researcher collected freshly laid turtle eggs and will take them back to Melbourne to hatch in the laboratory. The eggs will be hatched under different moisture conditions to find out if rising sea

levels in the future could have an effect on how strong and healthy the hatchlings become. The information will help inform future turtle management work undertaken by Tiwi Rangers. Once the research is completed, the hatchlings will be flown back to the Tiwi Islands and released at the beach where the eggs were laid.

Kate Hadden, TLC

Tiwi Rangers and researchers getting ready for a night's work



Place and Partnerships Conference



THE UNIVERSITY OF
MELBOURNE



Photos by James Henry

A Tiwi database for land management

Jane Elith, Gibson Farmer Illortaminni, Kim Puruntatameri
Kate Hadden, Margaret Ayre, Sofia Oliveira



Gibson F. Illortaminni, Kim Puruntatameri, Kate Hadden, Sofia Oliveira and Jane Elith

The Tiwi Land Council was invited to give a presentation at the “Place and Partnerships” Conference in Melbourne in April. The conference was about partnerships between organisations and what made them work. Gibson Farmer Illortaminni, Kim Puruntatameri and Kate Hadden from TLC joined up with Jane Elith, Sofia Oliveira and Marg Ayre from Melbourne University to talk about the partnership that was developed in 2011 between the two organisations, and is still producing results today in 2018.

The joint presentation talked about the many projects that have been carried out under the TLC/Melbourne University partnership, and that it stays strong because of mutual respect and ongoing support from both organisations. The talk was well received by the audience, who asked a lot of interesting questions at the end.

Listening to the other presentations over the two days, it was clear that the partnership between TLC and Melbourne University is a special one, and one that produces fantastic outcomes for both organisations. *Tiwi Land Council*



Gibson F. Illortaminni and Kim Puruntatameri answering questions from the audience



Jane Elith

Sofia Oliveira

Kate Hadden and Kim Puruntatameri

RISE program - opportunity for Tiwi students

Join like-minded Indigenous students from around Australia and interact with scientists to learn more about the principles and real-world applications of cutting-edge science.

The University of Melbourne and the Gene Technology Access Centre (GTAC) are proud to present the seventh annual Residential Indigenous Science Experience (RISE) program: a week-long camp held at the University of Melbourne to engage Indigenous students with science, technology, engineering, and maths (STEM) and to inspire them to consider a career in STEM as an option for their future.



Photos: RISE camp 2017 University of Melbourne



Working with their peers and some of Melbourne's brightest young research scientists, students spend the week exploring cutting-edge science in world-class facilities. Activities include science workshops, lectures, laboratory visits, social events and cultural excursions.

"This camp has opened up so many pathways that I had never considered previously. I have met the funniest, intelligent students and mentors. I can't express enough how amazing and supportive all mentors have been in trying to give us the best possible experience. A fantastic week overall." (Year 9 student, 2017 program)



RISE runs for five days from Monday 26 November to Friday 30 November 2018, with students staying at Trinity College on-campus at the University of Melbourne. Students will be supported throughout the week by live-in Indigenous and science mentors.

RISE provides costs to cover flights and accommodation for students to attend the camp, with scope to provide additional costs for support staff to accompany students to Melbourne.

We would be delighted to have some current year 9 and 10 students from the Tiwi Islands attend RISE 2018, and as well as covering all costs for students, we would be happy to cover costs for a teacher to act as a chaperone for the students. Teachers can contact Monique Alexander at rise-program@unimelb.edu.au for more details.

Kyle Birchill, RISE

RISE is proudly supported by the Faculty of Science, Melbourne School of Engineering, Medicine, Dentistry and Health Sciences, Faculty of Veterinary and Agricultural Science, Murrup Barak Melbourne Institute for Indigenous Development, and GTAC.

Murrup Barak is visiting Xavier College in May to talk about the RISE program.



The Hayden Reynolds Tiwi College Junior Guide Program



Junior Guides Freda Puruntatameri, Jess Stassi, Clinton Rioli, Paulinas Stassi, Bradyen Rioli, Rina Moreen and fulltime guide & mentor Anthony Guy



In 2016, the Hayden Reynolds Tiwi College Project expanded their program by launching the Junior Fishing Guide/Ranger Program. This was done in conjunction with Tiwi Island Adventures (TIA) and Shimano, with the aim of getting Tiwi College student's 'work ready'. This program continued in 2017 and allowed 6 students to enhance their skills in fishing charter boat management, knowledge of the Tiwi water systems and to share their stories with guests enhancing their confidence to enter employment post College studies. Already in 2018 we have seen 7 new guides go out on the water gaining

meaningful work experience helping prepare them for their future. After being a Junior Guide in 2017 and graduating from Tiwi College Anthony Guy was offered a full time position as a fishing guide at the Melville Island Fishing Lodge. He now acts as a guide as well as a mentor for the new Junior Guides coming through. All senior students at Tiwi College can earn the opportunity to be a 'Junior Guide' by working hard at school, showing core values Trust, Respect, Care & Mercy while showing an interest in this pathway.

Stuart Ward, Principal Tiwi College



Anthony Guy



Paulinas Stassi

Stuart Ward
Principal
Tiwi College
Pickataramoor, Melville Is., Tiwi Islands
LMB 127, Winnellie, N.T. 0822
Phone: (08) 8970 9024, Extension - 436