



THE TIWI

NEWS for
Traditional
Owners



CEO's Message

Welcome all to our edition of *The Tiwi* No 38.

Recently a full Tiwi Land Council meeting was held at Wurrumiyanga. Sadly, due to ill health, Brian Clancy, our former CEO decided to retire from the Land Council.

We wish him well and will continue to support him through his recovery. His retirement was effectively from the 1st August 2018.

The Full Tiwi Land Council discussed his replacement.

After much discussion, the Land Council appointed me as the replacement CEO of our Land Council.

As most of you would know, I have been the acting CEO 7-8 months.

As well as that I have served as a member of the executive management committee since early 2000.

This has given me the world of experience and knowledge regarding the affairs of the Tiwi Land Council,

Tiwi Islands and the Aboriginal Land Rights Act. I have also been a member of the ABA board.

Over the next 3 years, I know we will continue to work hard, following on from the good work already done by the Land Council.

I have accepted the appointment of CEO of TLC and I pledge to do whatever I can to assist our Tiwi communities and outstations where ever possible.

As an Indigenous person and holding such a position, I know the role will be very challenging.

I sincerely hope that all will allow me enough time to settle in and where needed, seek advice on matters relating to providing the best possible service for Tiwi people.

Continue page 2

NEWS from your TIWI LAND Council

Topics

CEO's Message	1
Contact Registrar	2
EMC's Notes	3
New appointment to ABA	3
New TLC website	4
Early burning pays off for Tiwi Ranger Program	5
Rangers support science	6
CRC NA visit Tiwi Islands	6
Wurrumiyanga Airport	7
NT Port & Marine	8
Safety warning - Truck size	9
Jilamara - Ngini Palini	10
Tiwi College - 10th anniversary	12



Celebrating 10th anniversary of Tiwi College at Pickataramoor in August

See page 12

Good to know

The Tiwi Land Council introduces the new TLC website and Permit System!



See page 4

www.tiwilandcouncil.com

CEO's Message



I will endeavour to work more closely with the family clan groups so that they are better informed and updated with information that relates to them and their land areas.

We have purchased our new TLC office in Winnellie at 116 Reichardt Road.

For years to come, this office will become a central hub for all our Tiwi Families to seek information and assistance. It will be a meeting place for Tiwi, Government Agencies, and others to conduct business for the benefit of Tiwi.

The location is very accessible for all in need.

Our Staff Garry, Kate, Terry, Rachel and Josephine will be based at our new office to provide service to all. Our Chairman, Gibson and Executive Member Stanley have relocated to Darwin and can assist where required.

All other executive members will be based on the islands and will be available for you to meet and talk about any of your concerns.

Our Full Council would like to see our Executive Team achieve a higher professional standard.

My aim is to have our executive team continue to upgrade their skills and knowledge by doing more training over the coming year, so they will be better prepared to advise where needed.

I am here to work for you and I look forward to your support in this new challenging role I undertake.

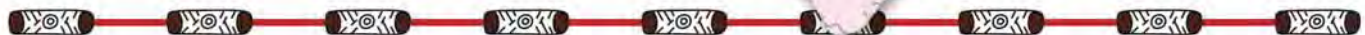
Andrew Tipungwuti
CEO Tiwi Land Council

Tiwi Land Council Register Update

Please be advised that TLC staff will be working on updating and improving the traditional land owners register over the coming months. If anyone has any queries or requests in relation to the land owners register, the contact details are:

Phone: 0436 120 150

Email: registrar@tiwilandcouncil.com



Executive Management Committee

EMC's Notes



Contact

Ph: 08 8997 0797

info@tiwilandcouncil.com

**Tiwi Land
Council**

Awana!

Once again, your Executive Managers have been very busy attending meetings, travelling, representing your islands on committees and working hard for all Tiwi People.

Hope you all had a great bush holiday time and got to go out bush for a while to enjoy the dry season weather.

Here at the Tiwi Land Council we were too busy to stop. In July TLC's newly appointed CEO, Andrew Tipungwuti, headed out with a NBC consultant to visit some outstations on Melville and Bathurst to see firsthand the areas that needed attention.

Of course, we had Managers and TLC Reps attend the Barunga festival where our Indigenous leaders came together to sign a Memorandum of Understanding for the development of a framework for negotiating a Treaty with the First Nations of the Northern Territory of Australia.

Also, during this time Andrew Tipungwuti attended his last ABA meeting down in Alice Springs after almost 10 years of service! What an exceptional display of commitment and drive. It is such an absolute display of continually working for all Tiwi people. We thank you.

Please know that we are working hard to take good care of the Tiwi Islands, our Tiwi families and our many friends.

Enjoy the last little bit of the dry season, get out there, go hunting, go fishing and be safe.

Muna

Executive Management Committee



Tiwi Land Council Executive Management Committee

New appointment to ABA



Photos by Heide Smith

Brian Tipungwuti

**new appointment
to ABA**

Andrew Tipungwuti has now finished up from nearly 10 years with ABA-Aboriginal Benefits Account.

The full TLC has thanked Andrew for his committed support on ABA to bring \$\$ back to Tiwi through successful applications.

Brian Tipungwuti is the new appointment to ABA, so please feel free to discuss any applications to ABA with Brian.

ABA funding round opens in January and closes in February. Then the second one for the year opens in July and closes in August.

Aboriginals Benefit Account (ABA) Grant Funding Round

Next ABA funding round starts January 2019 and closes February 2019

New TLC website and Permit System



As part of marking the Tiwi Land Council's 40 anniversary, we are proud to announce the launch of the new TLC website and Permit System. The new website is packed full of information, resources and beautiful photos.



It will help visitors learn more about our amazing islands and gain a better understanding and appreciation of our achievements, our people and our culture. The Tiwi Land Council engaged Barbie McKaige from Calytrix Communication to produce more than 90 web pages and source over 80 images from a range of photographers to illustrate the website. Barbie, who many will know from her years working on the Tiwi Islands with CSIRO, worked in collaboration with TLC staff to produce the website and permit system, while entity1 provided the technical expertise.



The new and more efficient Permit System will help protect the privacy of landowners, promote awareness and respect for our land and culture, safeguard our environment, protect sacred sites and promote visitor safety. We hope you enjoy exploring our new website!



www.tiwilandcouncil.com



Check out your new TLC website



Early burning pays off for Tiwi Ranger Program



Since 2006 discussions have been held in the Tiwi Land Council, and later in the Tiwi Islands Fire Management Committee, about fire management for greenhouse gas abatement. There has been unwavering and unanimous resolve for the development and implementation of a fire regime that reduces greenhouse gas emissions. These reduced emissions can subsequently be sold in carbon markets, potentially generating income that can be used for the continuing employment of Tiwi Rangers.

Greenhouse gas emissions can be reduced by burning earlier in the year, and by burning less country overall. Early season burning (before the end of July) results in cooler fires, and these fires give off less greenhouse gas. Late season fires (fires after the beginning of August) are hotter and create more greenhouse gas. In addition, cool fires burn more patchily, and research is showing that this type of burning plays an important role in protecting Tiwi plants and animals.

The Tiwi Islands Fire Management Committee, made up of Tiwi Landowners, meets several times a year to develop annual burning plans designed to reduce the area of the Tiwi Islands that is burnt in the late dry season.



Photos courtesy of ILC and Inpex

Over the last five years, Tiwi Fire Coordinator Bruce Holland and Tiwi Land Rangers have been working hard with Landowners to make sure that as much burning as possible is done before the end of July. Their work has been giving results, with far less greenhouse gases going up in the air in recent years.

In recognition of the good work being done on the Tiwi Islands, the Tiwi Ranger program was selected by Inpex to receive funding from their Savanna Fire Management Program, which is managed by the Indigenous Land Corporation. Under the Agreement, Inpex will pay Land Rangers to undertake annual burning in exchange for carbon credits.

Inpex and the ILC launched the Program at Wurrumiyanga on the 26th June. At the launch, Inpex General Manager External Affairs and Joint Venture, Bill Townsend, congratulated the Tiwi Land Council on being the first group to partner with Inpex and ILC to fund ongoing land management by Tiwi Rangers through changed fire regimes.

Kate Hadden, TLC





Tiwi Marine Rangers support science



Released hatchlings on Tiwi Islands

Thanks to the Tiwi Land Council, I was fortunate enough to visit the Tiwi Islands in April to collect olive ridley sea turtle eggs for my PhD research. I spent 3 nights with Marine Rangers James and Cecil, avoiding crocodiles and collecting the eggs.

I transported the eggs to Melbourne and incubated them at different moisture levels. Then in June, 122 hatchlings emerged from their eggs. I tested their swimming ability to see if the amount of moisture impacts the strength of the hatchlings. This research will help us protect the turtles from sea level rise and a changing climate.

On the 21st July I brought the hatchlings back to the Tiwi Islands. James and I went back to the beach they were collected from and released them. They all swam safely out to sea. Now that the hatchlings have been released, I hope that both the hatchlings and I will be able to return in the future.

Thankyou to the Tiwi Land Council and Tiwi Marine Rangers for allowing me to do my research on Tiwi turtles.

Chris Gatto, Monash University



CRC (North Australia) visit Tiwi Islands

The Cooperative Research Centre for Developing Northern Australia was established in 2017 with the mission to help grow the economy, investment, employment, markets, skilled population and wellbeing of the communities of Northern Australia. TPC Chairman Kim Puruntatameri hosted CRC NA representatives on their fact finding mission to the islands at the end of July where they were keen to make themselves knowledge-

able about and learn from the Tiwi Forestry operations. Representing the CRC NA were their CEO Jed Matz, CRC NA director and former NT Cattlemen's Association CEO Tracey Hayes, and NT Project Manager Sally Leigo. Needless to say that they were suitably impressed adding to the ever growing profile of Tiwi Plantations as a major export industry for Australia's north.



Softer Landings at Wurrumiyanga Airport



The NT Government has awarded a multimillion dollar contract to Fulton Hogan to rebuild 400 metres at the northern end of the Wurrumiyanga runway and to resurface the existing runway and parking apron area. It is expected this work will remove the rough bumps we have experienced on most landings for many years whenever we are returning to Wurrumiyanga.

Tiwi Enterprises staff have been providing local support to the project. This has seen Tiwi staff driving civil equipment such as road rollers, side tippers, water tankers and carrying out other tasks such as providing overnight security at the production site and acting as safety staff when a short cut road was built into the airport to avoid having all the heavy equipment driving through the airport car park. Another major task was to construct a security fence around the 200 metre by 100 metre hard stand area provided by Tiwi Enterprises for use by Fulton Hogan to site their production plant and to store some 15,000 tons of materials required for production of the hot mix being used on the runway. On many days up to three supply barges from Darwin were unloaded for the project.



Mantiyupwi Motel has worked closely with TIRC staff to meet the 50 plus rooms required for the project on a nightly basis. The motel Tiwi cleaners are only able to start cleaning the worker's rooms at 5 pm because the men work all night and sleep during the day. The Territory Alliance workers kitchen has been brought back into service with contract cooks being provided by Cooks2Go. It is expected the runway work will be completed by mid-September with the production plant removed by mid-October.



Ray Allwright, Tiwi Enterprises

Production plant for hot mix used on runway at Wurrumiyanga



NT Port & Marine



The 2014 commodity price crash saw a marked decrease in oil & gas exploration and general support activities in the Bonaparte Basin and thus Port Melville was placed into care & maintenance just as construction activities were completed. In May 2016 we saw signs of life returning to the industry, focus on efficient operations and modifying the Port to become a multi-user and multi-purpose facility, saw us make the decision to reopen and fully commission the Port. A great deal of work was required from both our local NT Port and Marine team and our parent corporation (AusGroup) to ready the Port for operations. We achieved this by November 2017 when the inaugural parcel of fuel was loaded into the tank farm from the 'Atlantic Harmony'.

Following this, in April 2018, we commenced bunkering vessels and to-date this has included oil & gas support vessels, Royal Australian Navy vessels, Australian Border Force vessels and the fishing fleets. We also provide fuel to land customers such as Tiwi Plantations Corporation, Plantation Management Partners, Tiwi College and the Tiwi Land Council. In the future we hope to not only increase the number and range of vessels bunkering at the Port but also the expansion of our ability to provide fuel across Tiwi.

Atlantic Harmony



As our operations have grown so has our team at the Port. We operate on a two team system with each team working back-to-back on a rotational basis thus ensuring we always have the required technical and other expertise at the ready. This personnel expansion has included appointing a dedicated Harbour Master and Pilot whose expertise ensures that our marine operations are to the highest standards of safety and efficiency; Bunkermen to ensure the provision of fuel to vessels and land customers is done safely and to required standards; maintenance and wharf personnel to keep our heavy plant, support equipment and the wharf - which is at the heart of our operations - is in the best of condition; Health Safety Environment and Quality personnel to make certain everything we do is safe for our personnel, contractors, visitors, the environment and Tiwi and; the all-important camp personnel who keep everything running.



HMAS Ararat at Port Melville

Looking to the future, as we grow, we hope to provide as many opportunities for Tiwi employment as possible. To commence this process NT Port and Marine in partnership with the Tiwi Islands Training and Education Board (TITEB) and the NT Government, devised the 'Port Operations Support Officer' (POSO) initiative. This has seen a group of Tiwi undergo a several months long training program to equip them with skills and certifications that will enable them to work in an industrial environment such as the Port or any similar facility or industry. From the Port's perspective, our commitment is to provide employment to two of the graduates as 'maintenance trainees' and utilise other POSO graduates as opportunities present themselves. We would like to take this opportunity to recognise TITEB and the NT Government for their support of this initiative and efforts to deliver the training.

The Port is proud to continue to provide port services to the plantation operations via Tiwi Plantations Corporation (TPC) and Plantation Management Partners (PMP). July 2018 saw the 'FP Wakada' depart Port Melville with shipment number 13 of woodchips to the world market which is a great achievement for the companies involved and Tiwi.

As a multi-purpose, multi-user facility, the Port also provides a wide range of services to other industries and government. Our accommodation camp offers comfortable rooms with a fully catered mess and is open for use by anyone visiting or working on the Island. The Port operates a wide range of heavy plant (ie-cranes, trucks etc.) which is available for hire to support infrastructure projects. We also supply required lay-down yards for these projects. Our ethos is to be as flexible and efficient as possible for contractors on the Island and help make projects a success.

NT Port and Marine sees a bright future for Port Melville and Tiwi and we are proud to be part of this community.

Jon Betjeman, Business Manager NT Port & Marine
Email: jon.betjeman@agc-ausgroup.com
Mob: 0415 949 019

Skandi Darwin



Tiwi workers in action - Loading ship



Peter Rioli, operating the D7 bulldozer



Brad Rioli, wharf supervisor



Michael Wilson, operating the 980 wheel loader

SAFETY WARNING

Increased size of the trucks running on the roads October November and next year

- Longer trucks with trailers, be careful when passing. Ensure you have enough clear road ahead.

- The trucks drive slowly so take care when coming up on slow moving trucks in thick dust.

- Be careful on blind corners, stay on left hand side of road.

- Trucks operating between Port to Pickataramoor 24 hours a day.

- Increased road work operations from Port to Pickataramoor means the road will be in better condition.



Jilamara Ngini Palini



Mario Walarmepui, Thereses Marie Puruntatameri, Nina Puruntatameri and Luciano Tipungwuti in Taiwan

In June this year, funding was provided by Charles Darwin University (CDU) and Australian Red Cross to enable four Tiwi Island community members to travel to Taiwan to meet internationally acclaimed Taiwanese Indigenous Artist Etan Pavavalung and his partner Grace Kuo, Art manager of E.art Art Studio (Etan Pavavalung's art studio). Jilamara Ngini Palini means art (and culture) from a long time ago. This is the Tiwi name given to this Taiwan visit.

The visiting Tiwi group included Therese Marie Puruntatameri, Mario Walarmepui, Lidwina Tepomitari (Nina Puruntatameri) and Luciano Tipungwuti who travelled together with Petra Buergelt from CDU and Joan Meredith from Red Cross. During the seven day visit the group had many new experiences. A long mountainous car ride brought the group to the original mountain home of Etan Pavavalung and his family where they saw devastation still evident from the 2009 Taiwanese Typhoon (Cyclone) called Morakot.

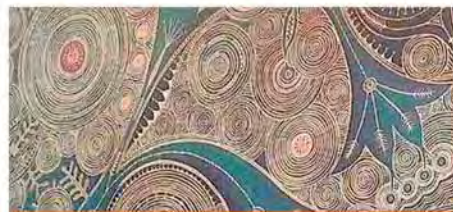
Etan is part of a family of famous Indigenous Taiwanese artists. His grandfather, his father, his brother and his brothers' son (nephew) are all famous artists in their own right.

Like Tiwi people, Taiwanese people pay great respect to their cultural heritage and they honour their past in tangible ways. In Taiwan, the Tiwi group quickly felt at home in telling Tiwi stories and learning about the Taiwanese stories. We heard the story of the Elders in Etan's village seeing the warning signs of oncoming disaster (Typhoon Morakot) in the changing colour of their bamboo plants - ancient knowledge that on that occasion they chose to ignore.

Tiwi people spoke about the signs they see when big winds and cyclones are coming. Like the arrival of the Storm Bird, the changing movement of the ants, and the special foam that gathers at the edge of the waves.

Therese Puruntatameri said: "I didn't think that Indigenous people in Taiwan would think about the same things as Tiwi people do. I was so surprised to hear the story about the bamboo plants changing colour before their big Cyclone disaster. Tiwi people use nature to give us warnings too."

Taiwan has a population of 23.57 million people, 540,000 of who are Indigenous people from 16 tribes. It is a country of many, many mountains and wide rivers. It has modern cities, tall buildings, fast trains, big highways and bridges and by contrast, the cities have lots of motor scooters, small streets and tiny alleyways. Much of the countryside has steep, narrow mountainous roads that pass through quaint villages nestled within mountains that magically sit among the clouds.



Sweet Fragrant Mountain Wind - by Etan Pavavalung

Jilamara Ngini Palini



What did we do while we were in Taiwan?

- Etan & Grace met us at the Taipei Airport and we took a fast train to Tainan City in Anping District (south of the middle of Taiwan where we stayed for one night in a very modern three storey house situated in a very tiny alleyway). This gave us an opportunity to experience staying in a big Taiwanese city.
- Then we travelled further south by car to Hao Chao Village, Wutai Township, Pingtung Country – living in a village built in 2010.
- During the days we stayed in Pingtung Country we visited Indigenous artists in a number of different mountain locations. We saw their art and practiced some of their techniques.
- We visited Shrines, Museums and Cultural/Art Centres.
- We watched live traditional and cultural performances.
- We visited the amazing Taiwanese Cultural Park where the Taiwanese government has supported all its 16 Indigenous tribes to come together to honour and teach Indigenous history to all who visit this superb place.



R to L: Therese Puruntatameri, Etan Pavavalung, Luciano Tipungwuti, Nina Puruntatameri, Etan's brother - in Hao Chao village in Pingtung Country in the south of Taiwan

What did we learn?

- Taiwanese people are shy people with a great sense of humour too.
- Taiwanese people keep themselves very busy, the young ones work and study and the older ones work too. Everyone works to grow, harvest and cook their own vegetables and fruits.
- We didn't see them drink soft drink. They make their own drinks from flowers and fruits. They grow and drink their own coffee and tea and they hunt, so they live off their own land.
- That's why we didn't get sick while we were away. We ate the same healthy food that everyone else ate.
- They have a very strong culture and their own beliefs that they then pass on to their next generations.
- Taiwanese people were interested to know about the Tiwi Islands and it was a great experience presenting to a public meeting of local people and sharing information about our education system, our governance system and our traditional Tiwi art, culture and dance.



L to R: Therese, Luciano, Nina, Joan Meredith (Red Cross), Mario and Petra Buergelt (Charles Darwin University) in front of Sweet Fragrant Mountain Wind - by Etan Pavavalung (Exhibition: Meet Etan's depictions through markings and patterns)

In closing Therese wanted to join with her other group members to say a big thank you to those who made the trip to Taiwan possible and such a success. Thank you to Red Cross, to CDU and to our Taiwan hosts Etan and Grace. Therese also added a special thanks to her Tiwi team members Mario, Nina and Luciano “for being such an awesome Tiwi group to travel overseas with” Therese added, “Maybe it’s too early to say this, but I will travel to the ends of the earth again with you guys. Such a privilege! Thank you!”

When asked how the trip changed you

Nina said: “I feel more confident and think that my artwork will change as a result of all that I have seen overseas. And people in Pirlangimpi could see us all return feeling very healthy – they were amazed.”

Mario said: “I now know that eating good natural home-grown food can make you feel very well and full of energy, very quickly. And I have started doing wood carving every day since I returned.”

Luciano said: “I never thought I would travel outside Darwin or the Northern Territory. I visited the other side of the world and it was amazing.”

Therese said: “When I saw the beautiful buildings and art in the Taiwanese Cultural Park that honoured all 16 Indigenous tribes I thought to myself, wouldn't it be nice to see the Australian Government put money aside to start a big project that held all our different tribes as well as European and other nationalities and cultures together in one big place in Darwin.”

Awana Mamanta of Tiwi College Celebrating 10th anniversary



The celebration day was a huge success with 350 – 400 people present including Nigel Scullion, Minister for Indigenous Affairs. The Family Group Home parents worked alongside students to cook a beautiful feast and all areas of school were open and on display for all to see with students leading the way.

I would like to acknowledge and thank traditional owners, the Manti-yupwi people who have given Tiwi College the Privilege to educate the young Tiwi on the land at Pickataramoor Community for the past 10 years.

Tiwi Elders, the Tiwi Education Board, Tiwi College staff, students and partners have lead us on the journey to where we are today.

The vision of the founding fathers was to have a school on Tiwi, ran by Tiwi for Tiwi which prepares our young people to leave school as good young men and women who are 'work ready'.

We are proud that here at Tiwi College we can now offer over 100 students a quality academic program in Junior, Middle and Senior classes that focusses on Tiwi strengths while providing direct pathways to work or even further study.

In our Academy program we develop our students to have strong culture, strong bodies and strong minds.

In our Family Group Home Program we develop students life skills so that they can leave Tiwi College independent and ready for whatever comes their way.

As I look into the future of Tiwi College I feel excited about the great potential and growth that is still to come.

Mana

Stuart Ward, Principal



BERNARD TIPILOURA

ROBERT TIPUNGWUTI

CYRIL KALIPPA

WALTER KERINAIUA

MATTHEW WONAEAMIRRI

PATRICK PURUNTAMERI

MARIUS PURUNTAMERI