



# THE TIWI

NEWS for  
Traditional  
Owners



## NEWS from your LAND Council

### Good to know

Christmas is  
coming soon.



### Topics

Chairman's Words	1
Merry Christmas from TLC	2
EMC's Notes	3
Health Notice	3
Farewell Barbie and Alan	4
Tiwi Calendars	6/7
Tiwi Land Council Workshop	8
Tiwi Marine Ranger DVD	9
Martin Clunes on the Tiwi Islands	10
Tiwi College	11
Happy New Year	12



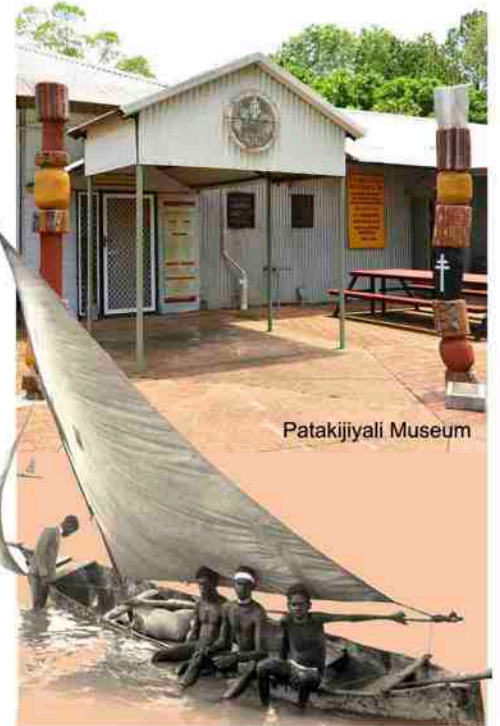
## Chairman's Words

Welcome to the Christmas Edition of *The Tiwi*. It is with a heavy heart that I again take some time to remember those close family and friends that have left us these past months.

I'd like to start with congratulations to Sr Anne Gardiner, Puwanikima, who it has recently been announced, will receive the Senior NT Australian of the year Award, to go with her well deserved Australian Medal and True Blue awards. After some confusion in the last edition of *The Tiwi*, I would also like to clarify and speak about the work that our own living legend, Sr Anne, has been doing with us for over sixty years.

Sr Anne came to us during the mission days, taught and nurtured our grandparents in the 1950's right though to our grandchildren of today.

The Patakijiyali museum at Wurrumiyanga, which has always been good, is now seriously amazing, with the newly included Tiwi Sports Hall of Fame section now complete.



Patakijiyali Museum

The museum is for everyone's benefit and enjoyment and is owned by all Tiwi people.

Sr Anne loves and works with all Tiwi people equally, whether they be Mantiupwi, Jikalaru, Wurlirankuwu, Yimpinari, Malawu, Mirrikawiyanga, Wuliranku or Munupi. And we all love Sr Anne just as much back!

Sr Anne is, and always will be part of our Tiwi family and we look forward to her continuing to be part of our lives for many years to come."



Sr Anne Gardiner with Tiwi children, photographed by Anne Geddes in 1988

# Chairman's Words



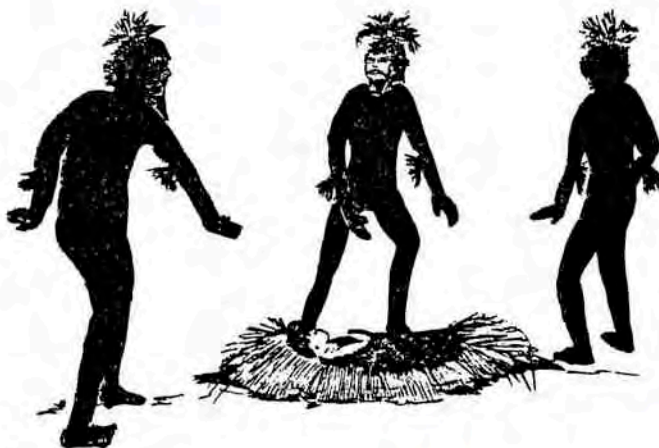
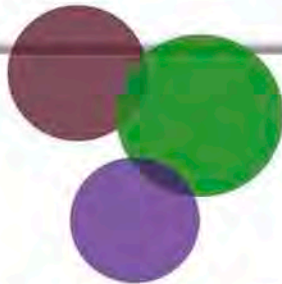
**Your** Tiwi Land Council continues to support our Tiwi Forestry Project and it is pleasing that our new Northern Territory Government as well as the federal Government are also supporting us. We are hopeful that our Port Melville development will soon be building on the vision for our people that was set by our great leaders of our past and will be holding community meetings to update everyone on Forestry and Port Melville in coming weeks and months.

**As we head** into the festive season, on behalf of your TLC members, I'd like to wish all of our family and friends of the Tiwi, a very merry Christmas, a Happy New Year and wonderful holiday period spent with your family. Mana,

*Gibson Farmer Illortaminni  
Chairman Tiwi Land Council*



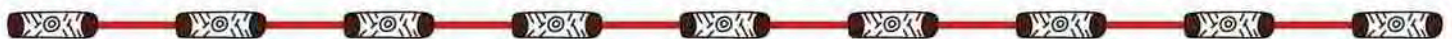
Chairman Gibson F. Illortaminni and Tiwi workers



**The Chairman and Members  
Of the Tiwi Land Council,  
On behalf of the Tiwi People,  
Extend our greetings  
And good wishes  
For a very happy Christmas,  
And we hope 2017  
is a very successful one.**



Sculptures by Gordon Pupangmirri, Ngaruwanajirri INC. Bathurst Is. NT



# Executive Management Committee

## EMC's Notes



Tiwi Land Council Executive Management Committee

### Awana,

Firstly, we take time to pay our respects to those who have lost loved ones in the past couple of months. The build-up is certainly upon us and thankfully some good, early rains are falling as well to provide some relief as we had towards Christmas and the end of 2016.

As usual this has been a busy time for the Tiwi Land Council and its Executive Management Committee. We continue to meet on at least a fortnightly basis. Recently at one of our fortnightly meetings we had some special guests attend seeking approval for some projects they are working on. It was great to hear from Tom Duncan who attended to request permission to do some research through CDU and CSIRO about threatened species on Indigenous land. Tom's research will look at finding out what plants and animals are important to Tiwi people, and what the threats are. Once his research is finalised Tom will share the information with Tiwi Land Council and Tiwi people in order to work together to look after plants and animals that are especially important to us all.

Just a friendly reminder, the flu season is here. A lot of people sick with the flu in the past month or so, so please take care - eat well, get rest and drink lots of water.

We also want to take this opportunity to urge families to have cyclone kits ready, including a first aid kit. Doesn't have to be a lot, but is important to have essential items like a good supply of drinking water, a torch, lighter or matches and some canned food – all just in case!

**And remember** family and friends, the Tiwi Land Council is your council. Please make contact with us if you would like to ask a question, have an idea, need information or are unsure about something. You can either talk to your TLC representative or can call the TLC Headquarters on 8970 9373.

Have a safe and happy festive season everyone!  
Mana.



*Executive Management Committee*

## Health Notice



**Syphilis** is a disease that can be caught by sexual encounters with other people.

It is a bacteria that starts with a rash or painless ulcer in the groin or mouth and then over time spreads to the brain.

If found early it can be easily treated with an injection of Penicillin.

**Last year** syphilis was spreading through the NT from person to person but it has arrived here on the Tiwis now.

If people take care and use condoms this infection can be avoided.

Anyone with concerns can get a check up during working hours at the clinic and we can help you straight away.

# Farewell Barbie and Alan



Barbie McKaige

This year we say farewell to a long and happy relationship with Alan Andersen and Barbie McKaige from CSIRO, who are both moving on.

Our CSIRO relationship started in 2003 when Ben Hoffmann came to Pirlangimpi to look for cheeky ants. Then a few years later we started talking about fire, and how fire management might provide benefit for Tiwi people. The partnership grew from there, going from strength to strength each year. Out the front were always Alan and Barbie, who had Tiwi people in their hearts from the very beginning.



Alan Andersen



**TIWI ISLANDS  
QUARANTINE**

# Farewell Barbie and Alan



It's hard to count up the all the projects and support they have provided since those early days. Projects like world leading fire research, protection of Tiwi plants and animals, work with Tiwi College students, and support for Tiwi Fire Roadshows and feral cat management. And who can ignore those wonderful Tiwi Seasonal Calendars and Plant and Animal Posters? The list goes on and on - it would take a whole edition of 'The Tiwi' to cover everything Alan and Barbie have done - whether project based or just always being there ready to help or put in a good word.



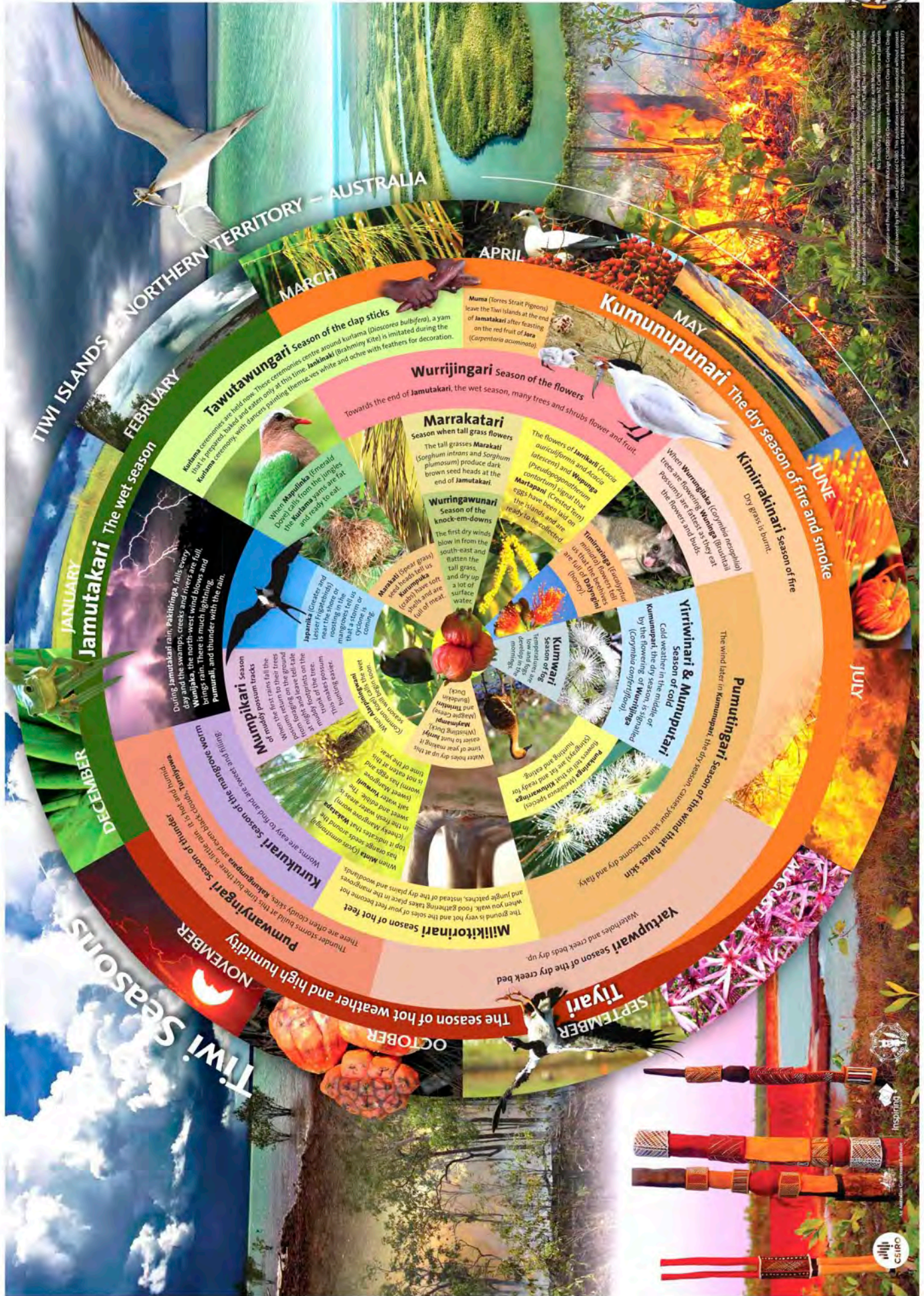
We will miss you both and hope you come back to visit. Who knows - maybe there are some exciting projects down the road where we can collaborate again. In the meantime, all the best, and a huge **THANKYOU** from all of us.

*Kate Hadden, TLC*





# Tiwi Seasons



Illustrations and photographs by the Tiwi Islands Land Council and CSIRO. The illustrations used for this infographic were created by CSIRO design, produced by CSIRO design, produced by CSIRO design.



# Tiwi Land Council Team Building Workshop



In November 2014, the Tiwi Land Council won the Northern Territory's Chief Minister's award for Excellence in the Public Sector and was awarded \$12,500.00.

The funds were awarded to TLC and assisted the Land Council's Executive Management Committee (EMC) to come together and do some really great work.

On the 27th and 28th of September 2016, the Land Council conducted a two-day leadership team development workshop for the EMC at the Tiwi Land Council HQ, Pickataramoor. The workshop assisted the EMC to grow and learn and to enhance their natural ability in presenting themselves as leaders, professionals and role models within the Tiwi community and beyond.



November 2014 the Tiwi Islands Economic Development Project received the Chief Minister's Award for Excellence in the Public Service



The Tiwi Land Council engaged David Devlyn from a Melbourne based organisation specialising in professional team development. David is a 'guru' in this industry and works with major companies all over the world. Some of his clients are BHP, the RAAF, Ericsson, Westpac, Crown Casino and Towers, WIN Television, Johnson & Johnson and the Nine Network Australia.

2016 TLC's team building workshop at Pickataramoor  
L to R: Richard Puruntatameri, David Devlyn, Stanley Tiploura, Brian Tipungwuti, Kate Hadden, David Guy, John Wilson, Brian Clancy, Andrew Tipungwuti, Leslie Tungatulum and Gibson F. Ilortaminni

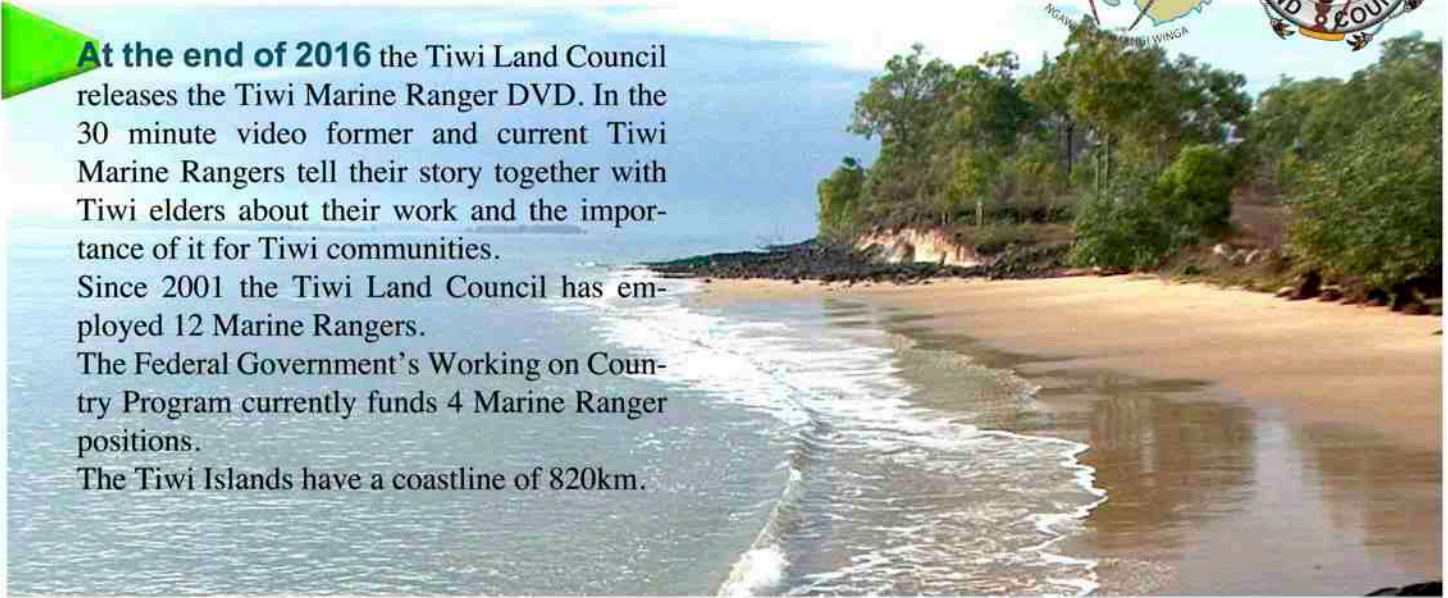
We are grateful for David's guidance and expertise given throughout this workshop. Those involved included the Chairman, CEO, EMC and four members of TLC staff.



# Tiwi Marine Ranger DVD



At the end of 2016 the Tiwi Land Council releases the Tiwi Marine Ranger DVD. In the 30 minute video former and current Tiwi Marine Rangers tell their story together with Tiwi elders about their work and the importance of it for Tiwi communities. Since 2001 the Tiwi Land Council has employed 12 Marine Rangers. The Federal Government's Working on Country Program currently funds 4 Marine Ranger positions. The Tiwi Islands have a coastline of 820km.



If you are interested in a copy of the Tiwi Marine Ranger story, please contact Kate Hadden, Secretary Land & Resources Tiwi Land Council:  
 Ph: 08 8944 8416  
 Email: [nrm@tiwilandcouncil.com](mailto:nrm@tiwilandcouncil.com)



# Martin Clunes on the Tiwi Islands



Clips from the movie: Martin Clunes met and talked to Pedro Wonaeameri and many other Tiwi



Mid 2016 Martin Clunes - BBC's Doc Martin - visited and wandered the Tiwi Islands to film an episode for his successful TV series: **Islands of Australia.** The documentary about the Tiwi was broadcast in October on channel 7.



# Tiwi College

## Hayden-Reynolds Garden Family Day



Matthew Hayden



On Wednesday 19th October, under beautiful blue sunny skies, we celebrated the long lasting relationship between Guy Reynolds, Matthew Hayden, Macquarie Bank and of recent times, KPMG.

Very symbolically Jenny Reynolds and Tom and Josh Hayden were here on the day, as the relationship has now flourished for 7 years. Guy Reynolds and Matthew Hayden are certainly considered an extension of our Picka Family, so it was wonderful to have their family here to celebrate the day.

Our staff, guests & students took part in a round robin competition of sports in the morning,

well organised by Macquarie Sports personnel. This was followed by a welcome of traditional Mantiyupwi dances and a smoking ceremony. All people were then hosted for lunch in our Family Group Homes. Here, everyone had the privilege of tasting a wide variety of traditional Pacific Islander food in celebration of our Family Group Home Parents' heritages.

It was a happy, relaxing day where we all celebrated the people of our Picka Family. The Hayden-Reynolds Garden Family day looks to be one that will continue well into the years ahead.

*Ian Smith, Principal*



TIWI LAND COUNCIL WISHES YOU



A PROSPEROUS 2017

Sculptures by Gordon Pupangmirri, Ngaruwanajirri INC. Bathurst Is. NT