



THE TIWI

NEWS for
Traditional
Owners



NEWS from your LAND Council

Chairman's Words	1
Tiwi Resources	2
Managers' Notes	3
Whale in Shark Bay	3
Timothy Cook's Telstra	4
Maralampuwu's Arafura win	5
Purrapimayi Shopping Centre	6
Quiz	6
Alberta Puruntatameri retired	7
Search & Rescue Exercise	8
Tiwi Forestry Environmental Audit	9
Forestry Clearing at Kilu-Impini	9
Stray Cane Toad	10
Liquor Act	10
Old Sawmill	11
Tiwi College and Matilda	12
Tiwi College's partnership with	
Scotch College	13
The Tiwi Ashes 2012	14
Funeral and Ceremony Money	15
Tiwi Bombers New Chairman	15
Tiwi Magic brings Jobe the	
Brownlow	16



Chairman's Words

We have a lot going on right across the Islands.

Out in the East we have been culling the Buffalo herd to restore the health of our land and the waterways that they damage. Here in the Forests, fires have kept us at work, often over 100 hours a week, protecting our Tiwi Plantations. It has been great to see more Red Goshawks nesting along our fire-breaks.

We now have more Red Goshawks than the total number thought to exist 10 years ago. Out to the West we have welcomed Andre Pautjimi at work as our Marine Ranger, and been proud of his inspection of two illegal boats fishing in our Port Hurd waters. The Land Council is working with our new Government to stop these people who continue to ignore the law and the ownership of our lands and waters.

Two of our outstanding Tiwi achieved remarkable success in August – Timothy Cook the first Tiwi winner of the Telstra Art Award – and Maralampuwu swinging the votes and respect for us all as our new Member for Arafura. We value their hard work, and congratulate them both on their achievements.

These months have also been sad for our families losing loved ones. Our last contact with Tiwi of the era leading up to the Second World War left us with ceremony at Garden Point led by our Leaders carefully performing the rituals required for a great and enduring Tiwi legend. Our sadness also contains our gratitude for lives that have kept us strong. The Land Council remembers and we offer our sympathy and prayers to all our Families.

Gibson Farmer Illortaminni
Chairman



Gibson greets new Chief Minister Terry Mills and Francis Xavier Maralampuwu at Wurrumiyanga. 30 August 2012

Good to know

Mat Hayden is bringing Wendall Sailor, Justin Langer and Mat Burke for our Tiwi Ashes at the College on Monday 22 October.



NEW
NT
GOVERNMENT

Tiwi Resources



Tiwi Resources Pty Ltd

Tiwi Resources is the organisation that helps Tiwi families

There are 8 land owning groups. Many have been broken into smaller family groups – at the moment there are 57 smaller family groups that have responsibility for their own funds.

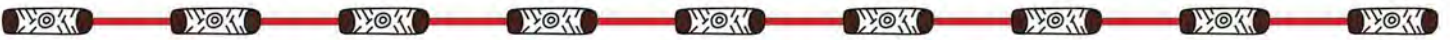
manage their monies earned from the use of Tiwi land. Over the years this has included money earned from the plantations, sand mining, fishing permits, and hunting. Funds are distributed to family members upon application. Approvals require signatories for each family group. Many families have established an investment fund and/or an education fund, to help ensure that money is there for special occasions and for the children's educational needs.

Tiwi Resources also assists the Tiwi Land Council with the management of the funds for ceremony and funerals; also Asset Preservation, Maintenance and Development, and Tiwi Premier & Island Football League funds.

The directors of Tiwi Resources Pty Ltd are Jules Kerinauia, Linda Pungamirri, Alice Munkara and Willie Rioli.



Tiwi Resources



Good to know

Our Junieur Land Council delegates want rubbish cleaned-up in the Towns and hope that adults can stop the fights after Club closes.

We have over 1000 oysters growing out in baskets for our oyster trials at sites Cyril has advised on the north coast.

Are you looking for

Vehicles for Hire?

Accommodation for Rent?

Lawn Mowing?



Contact Yvonne or Sharon on 8941 1162 or visit www.tiwienterprises.com

Managers' Notes



These dry season months are the busiest of the year. With our fast developing private economy they are getting busier than ever with decisions to be made about our land and its use, and the effects on our people. The Executive is proud that some of our younger leaders are stepping up at jobs within our Forests and in preparing their budgets for flows of money from Mining and Township Leasing that now exceed \$3m a year. The Land Council is required to check that Tiwi best benefit comes from use of this money. We all suffer if it does not.

During August and September we have considered the opinions and discussions from our Juniors Land Council who believe we must be strong about access and permission to come onto Tiwi land; that we must protect our own investments, particularly our plantations, and be more respectful to each other and care better about rubbish and litter. Street lighting was recommended; also finding better ways to stop fighting after the Clubs close. Our Juniors are also looking at skate park and BMX facilities and a cinema at Wurrumiyanga attached to a games arcade. Mantiyupwi Landowners are looking at these suggestions.

Our Telstra Winner Timothy Cook came to our August Land Council meeting where we also approved wording for Jenny Isaacs new Tiwi Art Book to be published in November. Mining exploration meetings have been approved and our Funeral and Ceremony funding guidelines tightened up because of less money and some people not using it properly. Inpex met again with us recently to buy carbon from our good fire control practices.

These months are also when we prepare our Audit and annual reporting to the Commonwealth Parliament about what we do and how we perform. Members are required to have Code of Conduct and Pecuniary Interest Registers completed. Also required are Related Party transactions disclosed by Members who are on the Committee of any of the 246 suppliers that the Land Council purchases from. Compliance and proper behavior remains a focus for us just as it was among our leaders during more traditional times. We congratulate our new Member Maralampui and welcome him to any and all of our meetings whenever he can make it.



Whale Stranding in Shark Bay



Photo Andrew Tipungwuti, Tiwi Marine Ranger

In September Tiwi Marine Ranger Andrew Tipungwuti spent a day in Shark Bay with Parks and Wildlife marine scientists. The day before a forestry fire crew had rung the Land Council with information that a large whale was stranded on a sand flat in Shark Bay.

Andrew went out that afternoon to see what was happening, but sadly the whale was dead. The next morning he went out again with Parks and Wildlife marine scientists Ray Chatto and Dennis Lowchoy. They measured the whale and took DNA samples to try and find out if it belonged to

a local population. The whale was nearly 17 metres long with an estimated weight of 60 tonnes. It was an adult male sperm whale.

Sperm whales are not uncommon in Territory waters, but they spend their time in deep trenches, not in the shallows. It is thought that the whale got sick and that's how it ended up in the shallow waters of Shark Bay.

The whale will be left to nature to break down, and the crocodiles and sharks will have plenty of food to keep them going for a while.



Timothy wins Telstra Award



Andrew Penn, Telstra CFO, Timothy Cook and Administrator of the NT The Hon Sally Thomas AM

Timothy Cook from Milikapiti has won the 29th Telstra National Aboriginal and Torres Strait Islander Art Award, with a large painting entitled *Kulama*. He is the first Tiwi artist to win the major award. This follows fellow Jilamara artist Raelene Kerinauia, who won the Telstra Bark Painting Award in 2011.

Timothy Cook on stage - receiving the Telstra Award

Timothy has been painting for 13 years at Jilamara Art Centre, Milikapiti. He likes to paint large canvases, and feels his work is very spiritual. He speaks about his *Kulama* paintings as his 'favourite, special' painting.

Timothy is one of only seven Australian artists to have work chosen for the The 7th Asia Pacific Triennial of Contemporary Art which is held at the Gallery of Modern Art and Queensland Art Gallery in Brisbane. The exhibition will run from 8 December 2012 – 14 April 2013.

The Asia Pacific Triennial of Contemporary Art is the Queensland Art Gallery / Gallery of Modern Art's flagship contemporary art event, and is the only major exhibition series to focus exclusively on the contemporary art of Asia, the Pacific and Australia.

Tim Cook's contribution to the exhibition will consist of several of his large *Kulama* paintings using natural ochres on linen. These will be combined with a series of distinctive Tiwi Pukamani poles.

These were carved by Patrick Puruntatameri and painted by Tim using natural ochres from the local area on Melville Island.

Timothy Cook's winning painting: "Kulama"



The 7th Asia Pacific Triennial will feature new and recent work by over 140 artists from 25 countries across the region, including new works by artists from across Papua New Guinea; new paintings, installations, sculpture and photography by Indigenous Australian artists; works by young generations of artists from Indonesia and Vietnam; and a special focus on West Asia, including works by artists from Turkey through the Middle East to Iran and Central Asia.

By Terry Wright



Pedro Wonaeamirri, John Wilson and other Tiwi celebrating Timothy at the evening of Telstra Award show

Maralampuwí Wins Seat of Arafura

Member's Message

Thank you for giving me the voice of respect to represent YOUR interests and concerns across the lands of ARAFURA. You have voted for the many strengths of our people. It is now time for us all to work together to demonstrate these strengths and abilities. From the great Townships of Maninigrida, of Jabiru, of Wurrumiyanga – and the communities at Oenpelli, Goulbourn and Croker, and on our islands - all are our Arafura people voting and believing in our own abilities to strengthen our economies and secure the services and resources to do it.



Francis Xavier on campaign trail in September with Leslie and Hedley Tungatulum and Steven Kantilla



I have accepted these responsibilities as your voice in our new Parliament. My own strength comes from the patterns of respect that my traditions have ingrained within me. My politics and my party believe in people more than programs; in encouragement and respect more than directing and patronizing people; in closing the gap between the strength we have and the outcomes we must deliver for our people.



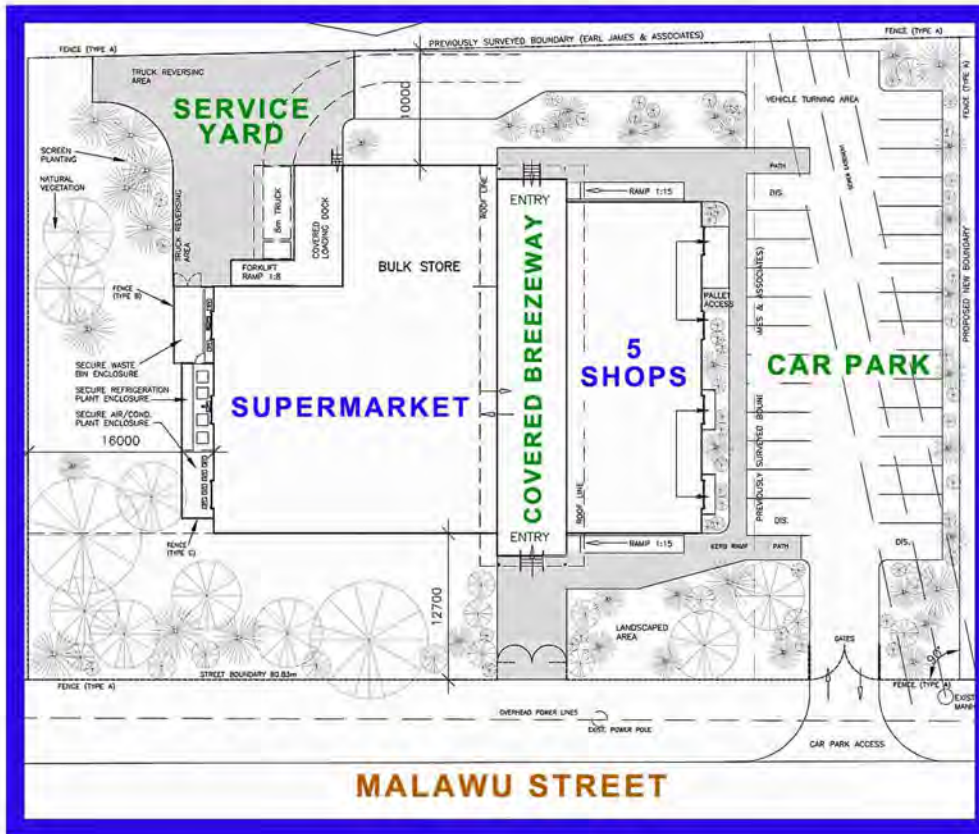
I want to let you know I am here for all the people of Arafura – not just those that voted for me.

I have heard your voices to strengthen local decision making, and to involve Aboriginal elders and traditional land owners in the decisions that affect their communities. Like you, I am determined to see economic growth and jobs for local people. I am also determined to see better local governance with improved infrastructure and roads funding. Our children are our future. Every child must get a quality education with real input from local people. Thank you for your trust in me to share your hopes and deliver upon our promises. With God's help I will not let you down.

First visit newly elected Chief Minister Terry Mills, Minister Alison Anderson, MLA Bess Price and MLA Francis Xavier Marlampuwi on the Tiwi Islands

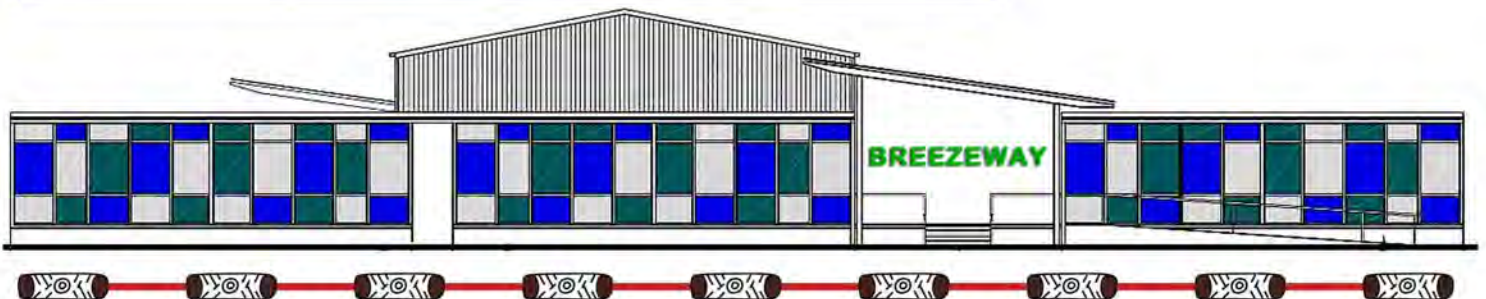
Opening of NT Parliament with Francis see page 16

Mantiyupwi Family Trust Purrapimayi Shopping Centre



Draft plans of the new shopping complex, which is scheduled to open in mid December 2012.

The shop is finished in China and it was inspected last week prior to shipping. It will start arriving on site at Wurrumiyanga around 3rd November.



Quiz

- How many convicts and military people were buried on our land at Fort Dundas between 1824 and 1829?
a) 5 b) 19 c) 33
- What is the average weekly wage for our Tiwi workers in the Forest?
a) \$585 b) \$715 c) \$1035
- How many people fly each year from the Tiwi Islands to Darwin and back?
a) 12,000 b) 22,000 c) 35,000
- How much does the Government spend each year on services for each Indigenous Australian?
a) \$19,000 b) \$32,000 c) \$44,000
- What kind of Whale was stranded in Shark Bay last month?
a) Sperm Whale b) Pilot Whale c) Hum backed
- How much fuel does an outboard use for an average day's fishing?
a) 25 litres b) 75 litres c) 100 litres
- How long is the Bathurst Island Airstrip?
a) 1000 metres b) 1450 metres c) 1800 metres
- Which is the longest Airfield on the Tiwi Islands?
a) Snake Bay b) Bathurst Island c) Maxwell Creek

Alberta Puruntatameri retired

After 50 years at work and a lifetime commitment to Tiwi Health Alberta Puruntatameri tells The Tiwi her amazing story about half a century of service to her people.

“I was a girl, just 15, 16 years old, when I started working at the Catholic Mission at Nguiu in 1962. Those were the Mission days and through work I got some experience by looking at the nuns and what they do. In 1965 they sent me to a nurses assistant training in the old Darwin hospital for 6 months. After that I studied more and had more training at the Katherine Institute. I learned how to check patients and how to deliver babies. When I look back I still think this was my happiest time to look after 12 sick babies in the Nguiu Mission in the 60s, although I did not have time to get married, because I looked after all these kids. I devoted my life to these kids.

In 1972 we went back from Nguiu to our own country. It was a government decision. My parents were hard working people and all my sisters did not rely on our parents. We became teachers, nurses, and filmmakers. We were independent. We got a job and paid for our own flat and house.

And there were tough times. At the beginning there were often no nurses or doctors. I delivered many, many babies in the bush. In 1982 I was asked to run the clinic in Pirlangimpi. I did that for 10 years and was both the manager and health worker. We worked as a team: Therese Burke, Wilhelmina, Marius Puruntatameri and Pius Timpungwuti – 2 male and 3 female. There was no telephone like today. We used the radio to call a doctor. There was no computer; all was written by hand; every report I had to write by hand. And it could be really tiring when you were on call. Quite often I took my sister Therese with me during the night, when it was 2 or 3 o'clock in the morning. She was a big help and a good company, for instance when we had to prepare the airport for the landing of the rescue plane. We needed to put out kerosene lamps, little tins filled with kerosene, and placed them on to the airstrip and lit them up for the plane to find its way and safely land.



Alberta Puruntatameri 2012

In 1984 I studied again and went to Bachelor College for the Associated Health Diploma.

And now after all these years me and my sisters are still sitting here and waiting, hoping that the young ones do training, become nurses or teachers like us – step into our shoes. We are waiting. May be one day.”

At the moment Alberta enjoys her new found time. She goes fishing and hunting, works in the garden and loves to spend time with friends.

Congratulations to Alberta for her very fulfilled working life.

Good to know

Tiwi over the age of 15 are receiving an average of \$256 a week. In the Northern Territory the average is \$745 a week.

The Census says 2345 people live on our Islands: 2000 Landowners; 85 other Aboriginal and Torres Strait islanders and 260 other people.

Some great police work making connections with Family is keeping over 90% of our kids off drugs. New surveillance targets the Dealers.

Search & Rescue Exercise - Melville Island



Airwing Pilots and NTES Spotters

The Pirlangimpi NTES Unit (PERPS) was established in 2011 and now has a volunteer establishment of 17 committed members who have been involved in marine and land based response and have been trained in Road Crash Rescue, First Aid and Small Boat Operations. The volunteers dedicate many of their personal free time to training and conducting demonstrations within the community and have proved to be a valuable asset to local Police and the Island as a whole.

On Friday the 7th of September a Search and Rescue (SAR) exercise was conducted along the coastline of the Northern beach of Melville Island extending seaward North of Cape Van Diemen. The exercise involved Police Airwing, Pirlangimpi Police, and the recently established Pirlangimpi Emergency Response Patrol Section (PERPS) – NTES.



Airwing after collecting 3 NTES spotters depart Pirlangimpi

The exercise was conducted in areas often frequented by recreational fisherman and local community residents and was an ideal opportunity to assess response capabilities of the NTES unit in conjunction with local Police and Airwing.

The scenario had 2 vessels in distress at sea with persons on board West of Seagull Island, persons stranded on Seagull Island itself, and a further stranded party on the beach to the South West of Cape Van Diemen, with Airwing and NTES spotters tasked to firstly locate the vessels with the beacons and then conduct grid search patterns to locate the people on the beach and island. Those on land had the opportunity to discharge flares during the exercise as well as place emergency “V” Sheets in a position that would enable sighting from the air.



The first land based party spotted South West of Cape Van Diemen



Vessels spotted after setting off flares

The exercise concluded at 4:30pm with all vessels and land based parties in distress successfully located. In total, 12 of the 17 local NTES members participated in the exercise, 2 local Police and all staff from Police Airwing.

The exercise highlighted areas that need attention, particularly communication issues via marine and land based radio systems but overall was a great success and one that highlighted to the community the capabilities of their NTES volunteer unit and their ability to effectively work with Police Airwing in a situation such as this.

Paul Willmington, Police Garden Point

Tiwi Forestry Environmental Audit



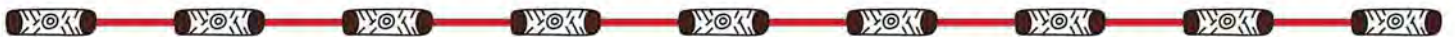
The Tiwi forest is owned by Tiwi people, and the Tiwi Land Council has said that it must be managed to the best environmental standard. The forest currently meets an international standard called ISO 14001, which means that it has an internationally recognised environmental management system.

The forestry must be accredited every year. This means that every year audits have to be done to see if it is still being run to international standard. If the audit is failed, then the accreditation is taken away.

Audits happen twice every year – once by the Tiwi Land Council, who has a qualified environmental auditor on staff, and once by an outside professional.



Tiwi forest has never failed an ISO 14001 audit, which means that it has always been run to an environmentally international standard. In August this year the Tiwi Land Council carried out their annual audit of the forest. As with all other years, the operation passed the audit, which means that it is still being run to a standard that is regarded as the best in the world.



Forestry Clearing at KILU-IMPINI



People have been talking about an area near Kilu-Impini waterhole that has been cleared of trees. This area used to be planted to Acacia mangium, and is part of the original forestry area. **NO NEW LAND HAS BEEN CLEARED.**

Why was this area cleared again? This area had good forestry trees. But someone deliberately lit a fire in the plantation, and burnt the trees. So it was no longer any good for forestry. The trees that could have been worth money became worth nothing. So the area needed to be cleared of all the rubbish that was left behind after the fire.

plantation tree that is growing so well already on the Islands.

Will any new areas be cleared? No. No new areas will be cleared for forestry. Environmental approvals mean that the area that is already planted is ALL that can be cleared. The only clearing that can happen for forestry now is when the trees are harvested to provide jobs and income for Tiwi people. And for that to happen, the trees that are already there need to be protected and looked after.

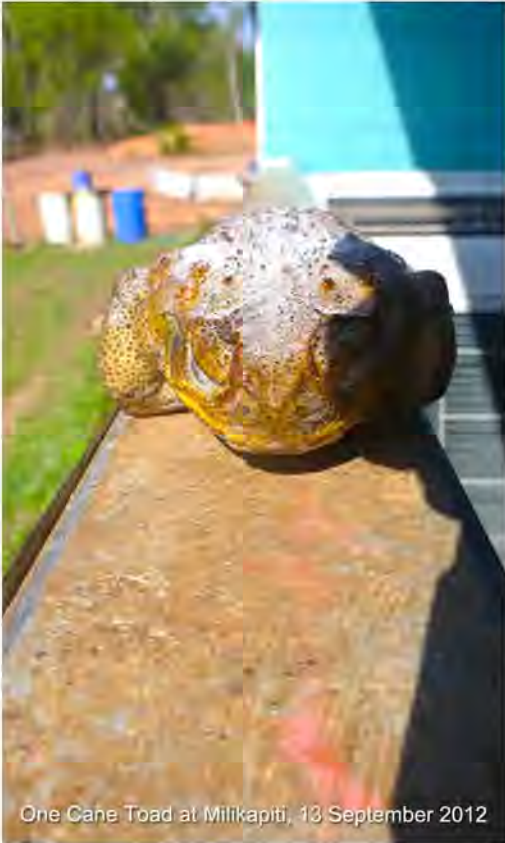
What will happen to the area now?

Tiwi Forests will plant the area again, this time to Eucalyptus trees that we have been experimenting with. It will become part of the trial to find the ideal Tiwi

BURNT PLANTATIONS
COST TIWI PEOPLE - \$ 1,200,000
 2 Fires were started near Plantation at the Kilu-impini waterhole on Wednesday the 22nd of June 2011

BURNT PLANTATIONS
COST TIWI PEOPLE - \$ 140,000
 8 Fires were started near Plantation on the roadside at Northern Beaches and 2 Fires at Kilu-impini on the main Pirlangimpi Road on Monday the 13th of June 2011

Stray Cane Toad found at Milikapiti



One Cane Toad at Milikapiti, 13 September 2012

On the 12th September Serena Puruntatameri found a cane toad in her yard at Milikapiti. She and her partner Nathan Pilakui captured it, and it ended up in the freezer at Andrew Tipungwuti's house, which killed it.

Cane toads like to spend nights in areas where there are lots of insects to eat, and will often sit under lights to catch their food. We think this was a stray cane toad because it was the only one found. If there were more cane toads at Milikapiti, then people would see them under lights and in their yards at night. It's likely that the cane toad came in on the barge that was at Milikapiti the day before.

The Tiwi Land Council continues to work with barge companies to ask them to **CHECK THEIR FREIGHT** before coming to the Tiwi Islands. Well done to Serena and Nathan for spotting the toad and dealing with it.

Land Rangers Kim Brooks Wommatakimmi and Willie Roberts have had a good look around Milikapiti and in areas where cane toads like to live. They haven't found any other toads, but will be setting traps just in case.

LIQUOR ACT

2nd NOTICE OF APPLICATION FOR A LICENCE TO SELL LIQUOR BATHURST ISLAND LODGE

Tiwi Islands Adventures Pty Ltd, HEREBY GIVE NOTICE that it has applied to the Northern Territory Licensing Commission for an "ON LICENCE" Liquor Licence to sell liquor from the premises located at Port Hurd, Bathurst Island NT,

PROPOSED TRADING DETAILS for the sale of liquor are as follows:

- The business proposed to be conducted on the premises will be in the nature of a fishing lodge.
- Lodgers will receive a selection of foods for breakfast and lunch and a chef prepared meal for dinner.
- The Lodge will stock a range of beers, wines, spirits and a small selection of liqueurs to cater for domestic and international guests.
 - Trading hours for alcohol will be from 12:00 hours until 23:59 hours, Sunday to Saturday, and shall only be sold to bona fide guests of the Lodge and Lodge staff.
- Alcohol will only be consumed within the restaurant and bar area or by Lodge staff in their respective living quarters.

This is the second notice of application.

The objection period is deemed to commence from Friday, 5 October 2012. (Date of publication of second notice).

Pursuant to Section 47F(2) of the Liquor Act an objection may only be made on the ground that the grant of the licence may or will adversely affect:

- (a) the amenity of the neighbourhood where the premises the subject of the application are or will be located; or
- (b) health, education, public safety or social conditions in the community.

Only those persons, organisations or groups described in Section 47F(3) of the Liquor Act may make an objection. Section 47G of the Liquor Act requires the Director of Licensing to inform the applicant of the substance of any objection. This will include the identity and where relevant the address of the objector.

For further information regarding this application contact the Senior Director of Licensing on telephone 8999 1800. Objections to this application should be lodged in writing with the Senior Director of Licensing, Gaming and Licensing, GPO Box 1154, Darwin, within thirty (30) days of the commencement date of the objection period.

Dated this 5th Day of October 2012.

The ill wind blowing for our strength

By following a creek off the Johnson River, you find a place where we began our modern journey from a vibrant traditional economy to join the Australian economy. It hides sheltered behind the mangroves. Machinery from the first Tiwi Sawmill was set up in 1897.



The 6th January 1897 was a bad day for Darwin. A cyclone called -THE BIG ONE – killed 28 people and wrecked 19 boats in Darwin Harbour. The Vic Hotel was left standing, but not much else. Timber was needed to rebuild Darwin Town. It came from our Johnson River Sawmill. Check out the stories with our families – Johnson, Wilson, Miller, Cyril, Wonaeamirri, Black and others.

Old Sawmill at Johnson River



Tiwi College



The vision of Tiwi Leaders for our College and Education Board was always founded upon the internal strength of our people. We persuaded Government to assist us, but have always known that our own Tiwi private economy would make the difference for our continuing survival. Corporate connections are where our graduates will find their jobs. Private business itself is investing in Tiwi education.

The members of the Tiwi Education Board wish to highlight the wonderful relationship between Tiwi College and the personnel of Matilda Resources at the Lethbridge Bay mine site. We have formally thanked Matilda Resources for the great relationship that has strengthened; particularly over the past two years.

Tiwi College has been challenged at times, with lack of diesel for the power generators and we have been helped by our friends at the Lethbridge site to see us through.



In a kind gesture of friendship and good will, Matilda Resources have donated this generous amount of fuel as a gift to the college. In our remote location, this type of relationship from a good neighbour is not forgotten.

In true Tiwi spirit, "what goes around, comes around". Tiwi College hopes to be a strong partner into the future through a series of days of work experience.



Matilda Zircon Limited

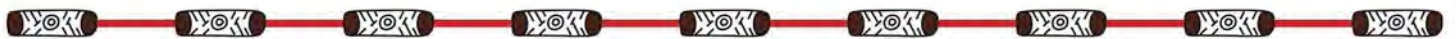
Some fine Tiwi College student artwork shall soon be sent to Perth to adorn the walls of Matilda Resources' head offices.

Matilda Staff at Office, Melville Island



Mining product: mineral sand

Matilda CEO and Directors, Melville Island



QUIZ ANSWERS from page 6

1. c) 33
2. b) \$715
3. c) 35,000
4. c) \$44,000
5. a) Sperm Whale
6. c) 100 litres
7. b) 1,450 metres
8. c) Maxwell Creek - 1,900 metres

Facts

Measuring rings on the teeth of the Sperm Whale in Shark Bay found it was a male 20 years old.

Studies show Taxi drivers' brains have been shrinking since they started to rely on street navigation systems.

Tiwi College's Partnership with Scotch

Tiwi College is very proud to have a wonderful relationship with Scotch College.

Since the year the college opened Scotch have brought groups of students to the school on both cultural awareness and football trips. Scotch College has also been a big supporter of the Tiwi leadership (TEB) of the college.

This year, teachers and students from both schools have worked together to develop an online program through which students from both schools interacted in weekly classes. The climax of this learning was a trip to Melbourne for the ten boys involved, to reward them for their attendance and hard work at school.

Scotch College generously provided this opportunity for the boys and made sure that they had the time of their lives. They attended classes at the school, had meals at the boarding house and were treated to a number of exciting activities around Melbourne including:

- Visiting the zoo and feeding the giraffes and seals
- Visiting the Eureka Skydeck and taking part in the "edge experience" which includes a small glass room with 10cm of glass separating us from the 88 story drop to the ground below.
- Took a tour of the MCG and attended the Essendon vs Richmond match
- Being a part of the Marngrook Footy Show live audience. Where one of the teachers at Tiwi College, Austin Wonaeamirri, was a star on the show.
- Visiting Melbourne and Collingwood football clubs.

The school also donated \$500 to the Tiwi College Library. As the Tiwi College staff attending the trip Austin and I were able to accept the donation on behalf of the school at a school assembly. I thanked Scotch for the donation as well as their ongoing support of Tiwi College. I also took this time to thank the students of Scotch College for the generous donation of the air-conditioners from the year 12 class of 2011. Aussie presented the school's library with Heide Smith photo books as a thank you for the donation. He also spoke proudly about his country and his father's role in developing the partnership between Tiwi College and Scotch College; something he hopes will continue into the future. A highlight for both the students of Tiwi College and Scotch family was the students' eagerness to share their culture. The students got painted up and performed for their host families in a night of culture dancing. They also danced in the main school assembly for over 1000 people. This was very emotional for all involved and Aussie and I were very proud of all the students involved, especially Noel Timpungwuti who showed great leadership on the trip, but especially in the culture activities.

Throughout the trip the young Tiwi represented their school, their people and themselves extremely well. They always did what was asked of them and never stepped a foot out of line. Every report given to the school about their trip has been positive. Thanks to everyone who made this trip possible, especially the elders who took the first steps in creating the Tiwi-Scotch Partnership. Your contribution to our school will never be forgotten.

*Josh Mackenzie,
Middle School Young Men Teacher
Tiwi College*



The Tiwi Ashes 2012



Monday, 22nd October

Tiwi College, Pickataramoor



Matthew Hayden, Justin Langer, Matthew Burke, Wendell Sailor

Traditional Tiwi Bush tucker: crabs, fish, buffalo, turtle..

Traditional dancing..

Rage with B2M..

Cricket fun for the kids and adults..

Face painting and Tiwi Arts..

Matthew Hayden bowled out by a Ullungura...

Justin Langer caught by a Mungatopi....

.....Oh yeah.....I'd really like to see that.....

Action starts at 10am...transport from your community to the Tiwi College starting at 8am BE THERE.....!!!!



Good to know

Quote by Simon McKeon, Australian of the Year 2011, Chairman of CSIRO - recently published in "Territory Q"

"..I was really delighted when I recently spent some time at Tiwi College.

What I saw at this college was fabulous. It's a bit isolated - an hour or so by 4WD from any township. That means on a Monday morning the kids are all collected by the teachers and they spend four nights in a residential environment with a full on set of activities, right through to a Friday afternoon where they go back to their communities.

I have never seen anything so inspiring in Aboriginal education anywhere in the country.

The icing on the cake for me was to know that organisations like CSIRO and CDU work with various Tiwi Rangers (such as Willie Rioli). They come into Tiwi College from time to time and say 'hey guys, if you want to have a career in land management here is a scientifically sound, important activity..'

..I found that inspiring. I came away from that place a different person."

Funeral and Ceremony Money is finished

NEWS from your LAND Council

Our 3 year allocation of funds for payment of Funeral and Ceremony and Cultural Training ran out in September.

During these years we have provided aeroplanes and expenses for over 60 Funerals; over 50 Ceremonies; as well as support and Art Centre Cultural Training of our School Kids by Tiwi Artists conducting weekly programs. This has cost \$670,000.



Our Chairman and Managers remind families of the old Kitty Hawk Rule established by Charlie Paw Paw in 1954;
- Family are responsible for funeral and ceremony. Family should do this work. This is not a contract job.
"I help my sister Kitty Hawk to sing. Not any of our Fathers pay for that." - Kulama. July 13th 1954.

Tiwi Bombers

The Tiwi Bombers Football Club is advanced in preparing to defend its NTFL Premiership title with finalization of the Board and Coaching teams.

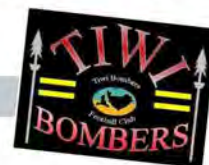
Darwin businessman Mick Burns has accepted the Chairman role for the new season and is well supported by Vice Chairman Cyril Kalippa. Other Board members are reappointed Andrew Tipungwuti and Cameron Hotton with Ms Anna McGill, Bob Beadman and Daynor Trigg serving their first terms.

The Coaching panel has been finalized with former Buffs Premier League Coach and Premiership player Damien Zammitt accepting a key assistant role along with Pularumpi's W. Rioli, Milikapiti's Pedro Rioli and reappointed Premiership Captain Shane Tipua-mantimerri.

Premiership Head Coach Leigh Crossman is excited about the coming season announcing that Austin Wonae-amirri will share the Vice Captaincy role with dual Best & Fairest Ross Tungatalum and Rupert Pupangamirri.



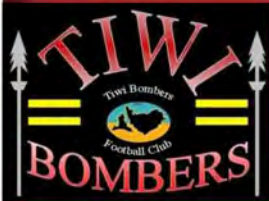
New Chairman Mick Burns



The Tiwi Bombers first game is against Southern Districts Crocs at the Fred's Pass Oval before the exciting Grand Final rematch against Night-cliff at Nguiu Oval on October 13th. The Home Game is the first of 4 with the Bombers also playing Darwin, Waratahs and St Marys at Nguiu.

The Club is seeking a boost in financial members and "followers" are urged to become genuine "supporters" by paying membership costing between \$30 Basic to \$65 Remote. Higher amounts with additional benefits include the Club Polo Shirt. Phone Club Manager Peter Atkinson on 0408-774239 soon!!

Contacts Tiwi Bombers see page 16



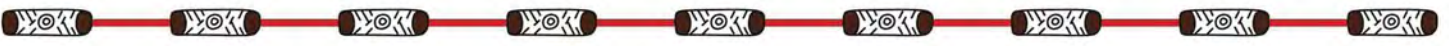
Contact
Tiwi Bombers:

TIO Stadium 70 Abala Rd.
Marrara, NT 0812

P.O. Box 43196 Casuarina, NT 0811
Ph. (08) 8980 4837 Fax (08) 8945 0069
Mob 0408 774 239
Email peter@tiwibombers.com.au
Web www.tiwibombers.com.au



Opening of the NT Parliament after the election
Tuesday 23rd October, 10am, Parliament House
Darwin



Tiwi Magic brings Jobe the Brownlow

The Tiwi connection with the Essendon Bombers is highlighted with these photos of an eight year old **JOBE WATSON**, who visited the Islands with his legendary father, Tim, way back in 1992. Jobe is the winner of the 2012 AFL Brownlow Medal. The next step is for a Tiwi Brownlow medalist...oh yeah, we'd love to see that!



Jobe the Winner
2012



Jobe the Fisherman and the Hunter 1992



Jobe at the Taracumbie Falls



Paddy Freddy P., Jobe and his father Tim



Pedro Wonaeamirri, Jobe and his father Tim



Melville Island, Tiwi Kids and Jobe 1992